

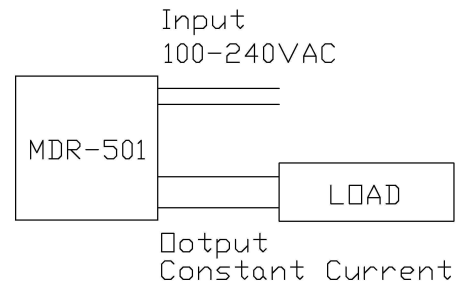
# SPECIFICATIONS

## MDR-501-700-5-N

### Features

- Operates at -40°C to 60°C
- Constant Current
- Higher Power Factor
- UL8750/1310 Class II compliance/Isolation
- Accurate output
- Miniature size
- Damp location approval

### Wiring Diagram



### Mechanical and Thermal

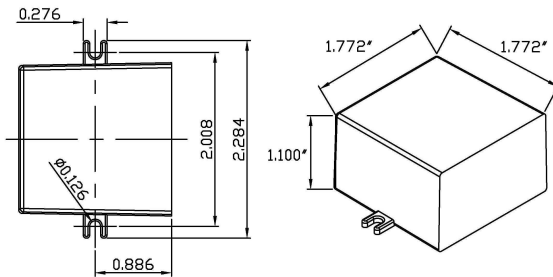
#### Dimensions

1.772"(L) x 1.772"(W) x 1.100" (H)

Weight 0.22pound

Lead Wire length 6 "(Standard)

Max. Case Operating Temp. 70°C



### Protection

- Short circuit protection
- Overload protection
- Thermal protection
- Class II Protection



### Electrical

Maximum load	6 W
Minimum load	2.5 W
Input Voltage	100-240VAC 50/60 Hz
Output Voltage/Current	8.5VDC/700mA
Power Factor	> 0.950
Max. T.H.D	< 13.8%
Efficiency	80 typ.

#### Note –

1. 350mA or 1000mA are available, please contact technical sales.
2. UL file No: E340871



Macron Associate Co. – A OEM Luminary, Power-Supply company

NO.352, Peng-Yi Road, Taiping, Taichung, Taiwan 411

TEL: 886-4-22708357 FAX: 886-4-22767307 Email: macron@macrongroup.com

F1214